

9

9

8

8

PALMER ADAPT-A-STUDS™

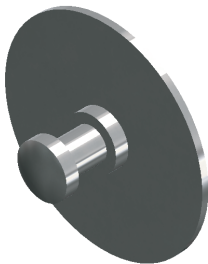
Palmer Adapt-A-Studs™ are permanent, self-adhering studs that can be used to hang elevator pads from glass, metal, sealed wood, or composite surfaces. The 5/8" long stainless steel stud has an adhesive backed 2" circular base plate.

Adapt-A-Studs™ eliminate the need for stud holes by using a high-strength bonding tape that creates a permanent, virtually indestructible "weld".

Adapt-A-Studs™ are intended to support 30 lbs. per stud 60 minutes after installation. Maximum bonding strength will be achieved 72 hours after installation.

CAUTION: ADHESIVE FORMS A VIRTUALLY PERMANENT BOND WITH SURFACE. ONCE ADHERED TO WALL OR OTHER SURFACE, ATTEMPTS TO REMOVE, AND/OR REMOVAL, IS LIKELY TO DAMAGE THE WALL OR SURFACE. Use care in selecting locations of studs and placing of such studs on the wall or other surface.

PATENT PENDING



Adapt-A-Stud™
Part No. S970

PALMER PADS®

worthy of the elevators they protect

INSTRUCTIONS

1. Read all instructions before installing Adapt-A-Studs™.
2. Clean surfaces with a 50:50 mixture of isopropyl alcohol and water. Make sure surfaces are completely dry before installing Adapt-A-Studs™.
3. Determine the desired vertical distance from the top of the wall to the center of the stud.
4. Fold or cut the Measuring Template at the desired vertical distance. Use the rulers on the side of the template as guides.
5. Place the top of the Measuring Template at the top of the wall.
6. Use a tape measure to measure the desired horizontal distance from the left edge of the wall to the center of the stud.
7. Remove the tape backing from the stud. Align the base plate of the stud with the cutout of the Measuring Template. Firmly press the stud against the wall.
8. Adapt-A-Studs™ will instantly bond to the wall. Wait at least 60 minutes for adhesive to cure before hanging elevator pads.
9. Repeat the necessary steps for each stud.

www.palmerpads.com
800.600.PADS

1

1

Adapt-A-Stud™ Measuring Template

PLACE STUD HERE ►

◀ PLACE STUD HERE